

THE CHOCOLATE FACTORY

BLOCK B - FLOOR PLANS

COMPLETION DATES:

- Block B: (15 New-build apartments) – November 2024
- Terrace 1: (4 New-build townhouses) – November 2024
- Block C: (5 apartments in historic listed building) - February 2025
- Block A: (6 new-build apartments) - Q2 2026
- Block D: (37 apartments in historic Chocolate Works Factory) - Q3 2026

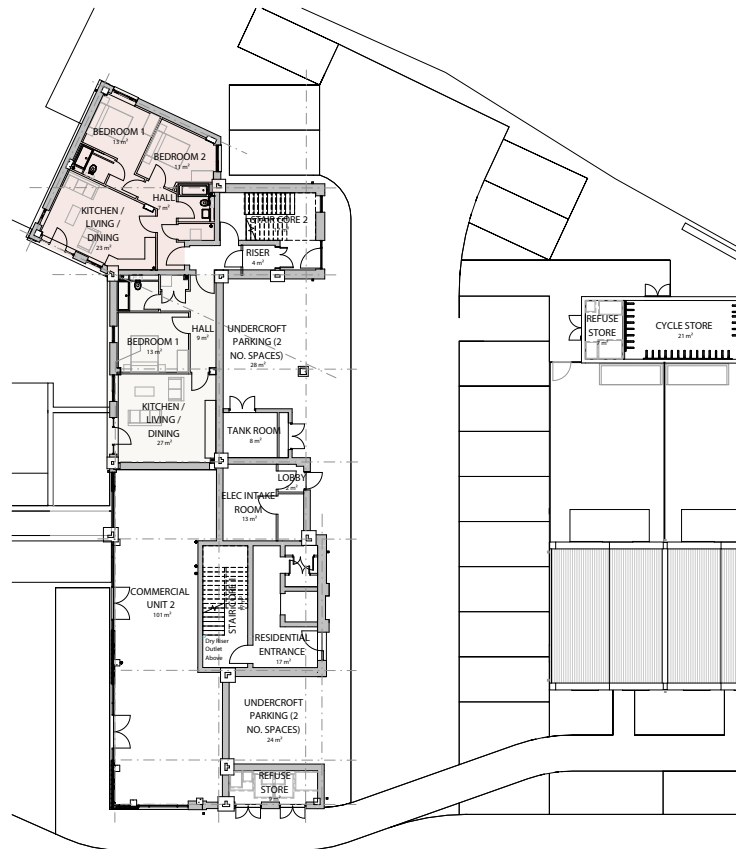
MASTER PLAN





1 BEDROOM 2 BEDROOM

GROUND FLOOR



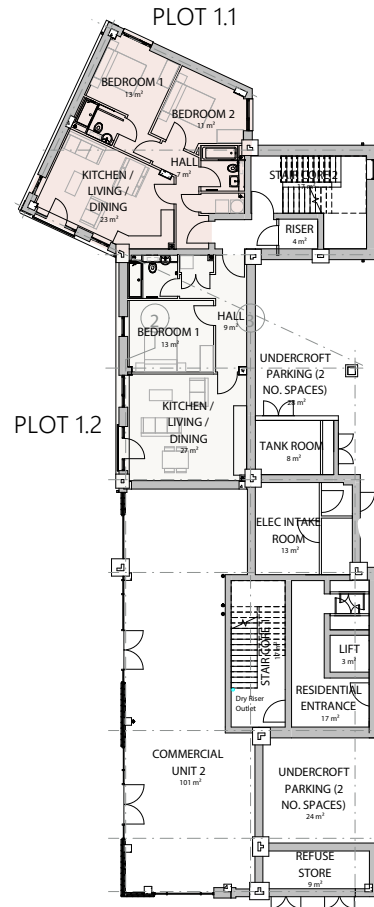
*** Where possible measurements have been taken from the central point of the room
 *** The listed dimensions are indicative and are for reference only.
 These dimensions do not relate to the overall apartment areas. i.e angled floor plans and internal rooms.





1 BEDROOM 2 BEDROOM

FIRST FLOOR
PLOTS 1.1 - 1.2



*** Where possible measurements have been taken from the central point of the room
 *** The listed dimensions are indicative and are for reference only.
 These dimensions do not relate to the overall apartment areas. i.e angled floor plans and internal rooms.





1 BEDROOM
 2 BEDROOM

SECOND FLOOR
PLOTS 2.1 - 2.5



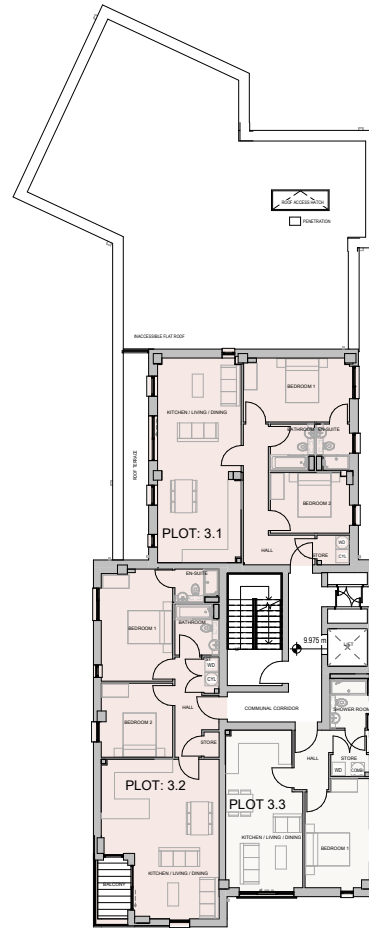
*** Where possible measurements have been taken from the central point of the room
 *** The listed dimensions are indicative and are for reference only.
 These dimensions do not relate to the overall apartment areas. i.e angled floor plans and internal rooms.





1 BEDROOM
 2 BEDROOM

THIRD FLOOR
PLOTS 3.1 - 3.3



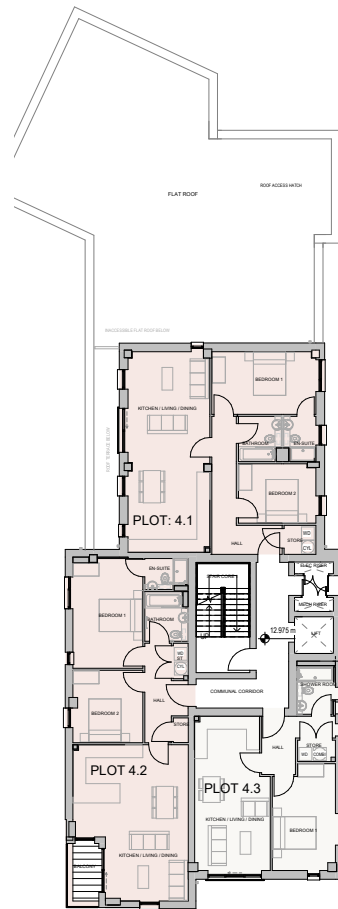
*** Where possible measurements have been taken from the central point of the room
 *** The listed dimensions are indicative and are for reference only.
 These dimensions do not relate to the overall apartment areas. i.e angled floor plans and internal rooms.





1 BEDROOM 2 BEDROOM

FOURTH FLOOR
PLOTS 4.1 - 4.3



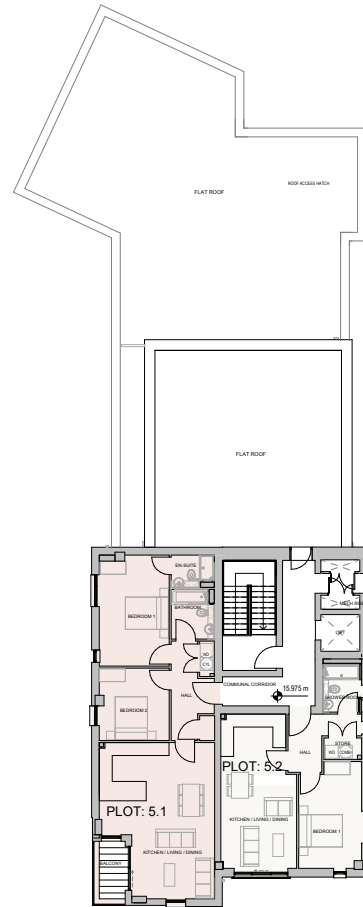
*** Where possible measurements have been taken from the central point of the room
 *** The listed dimensions are indicative and are for reference only.
 These dimensions do not relate to the overall apartment areas. i.e angled floor plans and internal rooms.





1 BEDROOM
 2 BEDROOM

FIFTH FLOOR
PLOTS 5.1 - 5.2



*** Where possible measurements have been taken from the central point of the room
 *** The listed dimensions are indicative and are for reference only.
 These dimensions do not relate to the overall apartment areas. i.e angled floor plans and internal rooms.





www.alliance-investments.com

“Alliance Investments Ltd” give notice that:

1. They are not authorised to make or give any representations or warranties in relation to the property either here or elsewhere, either on their own or otherwise. They assume no responsibility for any statement that may be made in these particulars. These particulars do not form part of any offer or contract and must not be relied upon as statement or representations of fact.
2. Any areas, measurements or distances are approximate. Figures provided for living costs (for example, service charges) are estimates only and may be subject to change. The test, images, and plans are for guidance only and are not necessarily comprehensive. It should not be assumed that the property has all necessary planning, building regulations or other consents and Alliance Investments Ltd have not tested any services, equipment or facilities. Purchasers must satisfy themselves by inspection or otherwise.
3. These particulars were prepared from preliminary plans and specifications before the completion of the properties. These particulars, together with any images and/or figures that they contain, are intended only as a guide. Properties may have been changed during construction and final finishes could vary. Prospective purchasers should not rely on this information but must get their solicitor to check the plans, specification and property information provided during the sales process. Any product names referenced are indicative of the quality and may be subject to change in the final specification. The developer retains the right to amend the final specification of properties.